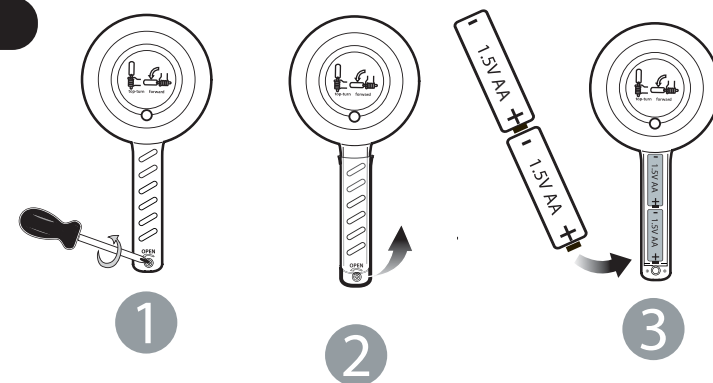


Spin n Go

BATTERIES REQUIRED: 5 X "AA" batteries, (sold separately)
WARNING! Always use under direct adult supervision. For use by ages 3 and up.
Please read instruction booklet carefully before operating Spin 'n' Go.
Please keep instruction booklet and display box for future reference.
Any Questions?
Email our Customer Service Dept.: customerservice@kidgalaxy.com
Call our Customer Service Dept.: Kid Galaxy Customer Service, Toll Free 1-800-816-1135

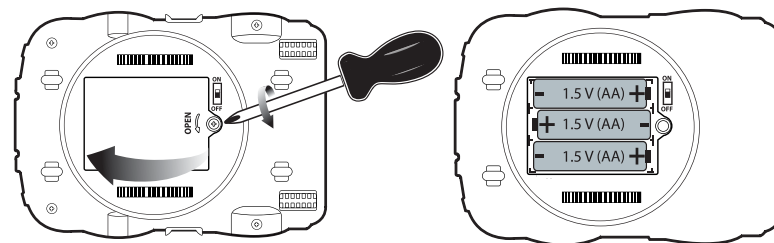
Controller

1. Unscrew battery cover on controller with Phillips screwdriver.
2. Lift battery cover up and remove.
3. Install 2 "AA" batteries with polarity as shown in battery box.
4. Replace battery cover and fasten in place with screwdriver.



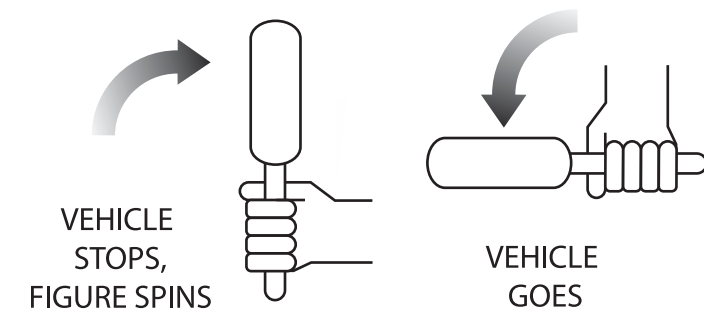
Spin n Go

1. Unscrew battery cover on car bottom with Phillips screwdriver.
2. Lift and remove battery cover.
3. Install 3 "AA" batteries with polarity as shown in battery box.
4. Replace battery cover and fasten in place with screwdriver.



Operation

1. Turn vehicle and controller switches on.
2. Raise controller up, figure spins 360°.
3. When figure points in desired direction, lower controller and vehicle will turn and drive in that direction.



VEHICLE STOPS,
FIGURE SPINS



VEHICLE GOES

NOTE: product may differ from images slightly!

WARNING!

PLEASE READ THIS CAREFULLY BEFORE USING.

- Do not immerse your transmitter, it is NOT water-resistant.
- Please run your Spin n Go indoors on a smooth floor or outdoors on a dry, hard surface only.
- Keep child's fingers, hair, face and clothing away from the spinning wheels.
- It is recommended that children should be under adult supervision when they are playing with the Spin n Go.
- Keep away from fire or hot and/or humid environments.
- Do not disassemble the product.

The improper use of the controller batteries may cause excessive heat, battery leakage, explosion and damage or lead to injury. Please read the instructions below.

- Only use "AA" alkaline batteries.
- Do not mix alkaline, standard (carbon-zinc), or rechargeable (nickle-cadmium batteries).
- Do not mix old and new batteries.
- Turn off power when installing or replacing batteries.
- Please install the batteries with the correct polarity, as indicated by the +/- signs.
- Remove the batteries when the product is not in use.
- Do not short circuit or disassemble. Keep away from fire.

Other cautions when using the Spin n Go and its controller/transmitter:

- If any batteries you are using start to leak, carefully remove them without letting them contact any part of the body, properly dispose of batteries and replace with fresh batteries.
 - When other radio controlled products with the same frequency are used nearby, this may cause interference and your Spin n Go may not work properly.
 - Do not bend, tear, strongly hit or drop the Spin n Go, transmitter, antenna shaft, or antenna wire.
 - Do not place any object onto the wheel axles.
- Do not start the Spin n Go when the wheels are unable to spin freely.

FCC REQUIREMENT

NOTE: This equipment has been tested and found to comply with the limits for a Class B digital device, pursuant to part 15 of the FCC Rules. These limits are designed to provide reasonable protection against harmful interference in a residential installation. This equipment generates, uses and can radiate radio frequency energy and, if not installed and used in accordance with the instructions, may cause harmful interference to radio communications. However, there is no guarantee that interference to radio or television reception, which can be determined by turning the equipment off and on, will not result. In this event, the user is encouraged to try to correct the interference by one or more of the following measures:

- Reorient or relocate the receiving antenna.
- Increase the separation between the equipment and receiver.
- Connect the equipment into an outlet on a circuit different from that which the receiver is connected.
- Consult the dealer or an experienced radio/TV technician for help.

NOTE: Changes or Modifications not expressly approved by the party responsible could void the user's authority to operate this device.

KID GALAXY INC. LIMITED WARRANTY

Kid Galaxy's products are covered under a limited 60 day warranty against manufacturer defects. If a product is deemed defective and falls within the 60 day period, Kid Galaxy will repair or replace it at no charge. We require a copy of the original sales receipt to validate the purchase. Product must be purchased within US or Canada to be eligible. Please email us at: customerservice@kidgalaxy.com or call us!

WARNING:
CHOKING HAZARD - Small parts
Not for children under 3 years.

Toll Free Hot Line: 800-816-1135
www.kidgalaxy.com

Kid Galaxy, Inc. 150 Dow St., Ste. 425B, Manchester, NH 03101
Product Manufactured In China

Kid Galaxy

Copyright 2010 © Kid Galaxy, Inc.